

BREEZFOG 450

fog machine



Save this instruction properly

All the information is subject to change without prior notice

Version 1.1

- Never put any flammable material (lipid, gas, perfume etc.) into the tank, read the user manual thoroughly before operation.
- Better use our high quality water-based fog fluid, random use with other fog fluid may jam the pipe, or even erode the components inside.
- Keep sufficient fog fluid in tank. Operating the unit without sufficient fog fluid, the pump will stop working.
- If any abnormal running occurs, stop it immediately, empty the fluid, and bring the done up unit (recommend original box) to your agent or dealer for servicing. Make sure all fluid is empty from the tank before moving or shipping.
- Never drink fog fluid. If ingested, call a doctor immediately. If fluid contacts eyes or skin, rinse skin thoroughly with water.
- Read user manual instructions thoroughly before operating. Follow the instruction. Never remove warning or informative labels from the unit.



Caution!

There are no user serviceable parts inside this unit. Do not attempt any repairs yourself, doing so will void your manufactures warranty. In the unlikely event your unit may require service please contact your local dealer.



Please note:

Specifications and improvements in the design of this unit and this manual are subject to change without any prior written notice.

Important

The wires in this mains lead are colored in accordance with the following code.



EU

Green and Yellow—Earthed (E)
Blue – Neutral (N)
Brown – Live (L)

USA

Green and Yellow—Earthed (E)
White – Neutral (N)
Black – Live (L)

Warning: This appliance must be earthed.

Warning!



Like all electronic products, BREEZFOG 450 must be used with safety precautions in mind.

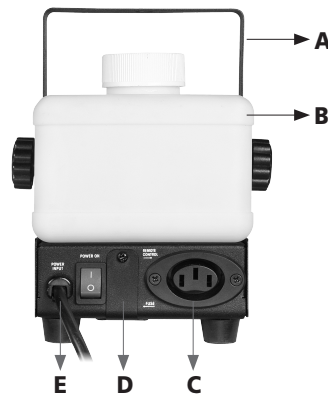


Fill enough fog fluid before plugging in, empty fluid tank when not in use or moving.

- Products for indoor use only. Keep away from liquids. Never operate in rain or in damp conditions.
- Use only appropriate, grounded electric power supply for your unit. See your product specification label for appropriate power supply. This appliance must be earthed.
- Disconnect from electric mains power supply when not in use, when filling the fog fluid tank, or when changing a fuse. Keep unit dry. If moisture or liquids enter the fog machine case, immediately disconnect power supply. Contact a service technician to determine safety for use.
- Keep machine in flat position, never put it in tilted place.
- Before moving fog machine, always drain fog fluid into the tank and tighten the tank cap securely to avoid spilling.
- Without user-serviceable parts in the package, please contact your local agent or qualified technician for servicing.
- Without changeable structure by non-qualified user, please do not open the up cover or have any change at will, otherwise, it may cause accident!
- Fog machine is for adult use. Keep out of reach of children. Never leave the unit running unattended.
- Fog machine nozzle gets hot over 200 degrees (centigrade) during use. Don't touch! Maintain a safe distance over 100CM. Never aim the nozzle directly at people.
- Keep case closed while operating. Put fog machine in drafty place, do not insert objects into air vents. Allow 20cm space or above around the machine for proper ventilation.
- Keep fog machine away from flames and flammable items. Never aim the nozzle at open flames or sparks. Use only high quality water-based fog fluid. Never put flammable substances into the tank.
- Machine must cool down before cleaning, servicing or storing.

Page 1

Figure1 Fogger Functions



- A. Bracket
- B. Fog Fluid Tank
- C. Control Socket Connection
- D. Fuse Holder
- E. Electric Power Cord

Description

BREEZFOG 450

- Compact high output fog machine.
- Visible fog fluid tank.
- Liquid pipe is hidden inside the machine, so the outside looks clean and beautiful.
- LED heating indicator system in tank: Red=Heating; Green=Ready to use.
- A special heating element design, which use of jointless oil transmission pipeline system minimizes the possibility of blockage.
- An easy-to-use design made for convenient operation in various settings.
- Triple safety protection of heater gave consumers more security.
- High-performance pump for great fog output.
- Mobility, compact and lightweight exterior. Single yoke to mount on a wall or from trussing bracket.
- Operate by line controller (LC-2N), wireless controller (RC-2N). Simple and humanized design makes BREEZFOG 450 easier for use.

Page 2

Page 3

Getting Ready

All products are thoroughly tested at the factory and shipped in perfect condition. If damage has occurred during shipping, or if components are missing, please contact your local dealer immediately.

Your package should include:

1. One BREEZFOG 450
2. One Controller  One product user manual

Set Up

1. Open the shipping carton and carefully remove the unit from the shipping carton.
2. Be sure to remove packing material from around the fog machine, especially near the nozzle.
3. Set the fog machine on a dry, flat surface.
4. Use only high quality, water-based fog fluid.
5. Firmly attach the remote control mechanism to socket (C of figure1) on the back of the unit.
6. Plug mains power cord from the fog machine into appropriate power supply socket. Wait about 4 minutes for heating element to heat up.
7. Refer to your controller manual for operation details. (Appendix A)
8. If fog is emitted continuously for a long time, the heating element temperature may drop, shutting off fog production. If so, please do not activate for emission. Wait briefly. When the heating element temperature rises, fog emissions can be resumed.

Operation

Remote Control Operation.....

For best result, please use LC-2N line controller or RC-2N wireless controller.

1. Firmly attach the remote control to socket (C of figure1) on the back of the unit.
2. Plug mains power cord from the fog machine into appropriate power supply socket. A lit red LED under the tank indicates that the fogger is power on. Wait about 4 minutes for heating element to heat up, a lit green LED under the tank indicates that the fogger is ready to fog.
3. Refer to your controller manual for operation details. (Appendix A & B)

Page 4

Note other important detail:

Plugging **FREEZFOG 450** in, the red LED under tank bottom will glow indicating power on & warming-up. Check if with correct voltage in case it doesn't glow. A lit green LED under tank bottom appears as warm-up arrives at fogging point, indicating a finished heating time (ready to fog).

Note that fog machines develop condensation around the output nozzle. This may result in moisture accumulation on the surface below the output nozzle. Consider this condensation when installing the unit.

All fog machines may sputter small amounts of fog occasionally during operation and for a minute or so after being turned off.

Should there be any low fog emitted, running noisily or hindered fogging, pull out the plug immediately. Check if string enough fog fluid, or if outside fuse, controller connection and power supply improper, if not, plug-in again, still persists abnormal running, check if with an unhindered pipe, with flowing fluid. If causation is unclear, stop running to avoid any damage, shut down to cool it, and bring unit to your local agent or appointed service place for inspection, prohibit any dismantlement by yourself.

** Although the LED is installed beneath the liquid tank, user can see change of the color and the blinking speed by looking directly at the tank.

Troubleshooting

This troubleshooting guide is meant to help solve simple problems.

If a problem occurs, carry out the steps below in sequence until a solution is found. Once the unit operates properly, do not carry out following steps. If the problem persists, refer servicing to a qualified technician.

Power Connected but No Fog Is Emitted

1. Check the power supply. Plug the unit into grounded electric power supply socket with proper voltage.
2. Check your controller if in correct connection, test the battery if power enough for wireless controller.
3. Disconnect fog machine from electric power supply. Replace fuse with one of the same type.

Page 5

Maintenance

Before doing maintenance, please make sure that the power is cut, the power cord is unplugged, and the machine itself has cooled down.

The maintenance must be done by qualified person.

- The fog liquid is not allowed to get dirty. Be sure to always clean or replace the caps on the fog liquid vessel and tight the cover of the fog machine liquid tank immediately after filling.
- Periodically check the connections among the oil tube, the pump and the heater to see if there's oil leaking. If positive, lock tight the connections carefully with proper tool.
- PC board should be kept from being dirtied with oil. In case this happened, dismantle carefully the PCB, and have it brushed clean both sides with dilute alcohol. Leave it dry itself, then install it back. Make sure all wires are well connected.
- Clean the metal cover with dry cloth.

Product Specifications

Name	BREEZFOG 450		
Item No.	BREEZFOG	Tank (liters)	0.5L
Heater Power	400W	Bracket	YES
Power Consumption	420W	Dimensions(LxWxH W/Handle)	230x142x140 mm
FUSE(120V)	T6.3A/250V	Weight (kg) without controller	1.5 kg
FUSE(230V,240V)	T4A/250V	Voltage	120V,230V,240V 50/60Hz
Warm Up time(min)	4	Matching Controller (Included)	LC-2N
Fog Output (cu.ft/min)	2000	Matching Controller (Optional)	RC-2N
Fluid consumption (ml/min)	15ml/min		

* Voltage is preset at the factory and may not be changed.

Appendix – A LC-2N

Wired Remote Control Operation:

The BREEZFOG 450 is designed with 3m wired remote controller with JY cable. Once the fog machine is plugged, the red LED on this remote controller will light up. When fog machine has reached operating temperature, the green LED lights up, and indicating the fog machine has ready for emission by pressing the button. The green LED is off for about

Page 6

4 minutes during fog machine warm-up and re-heating cycles (about 40 seconds), and turns on when the fog machine becomes workable.

Cable Length: 3m
Connector: JY cable
Function: ON/OFF

- A- JY cable
- B- Button
- C- Green LED (ready)
- D- Red LED (power)



Appendix – B RC-2N

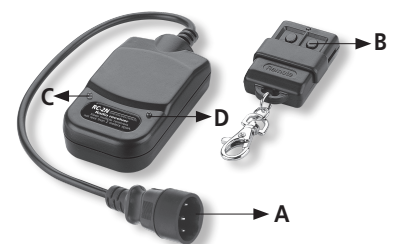
Wireless Remote Control Operation:

The BREEZFOG 450 is designed with wireless remote controller. Workable remote distance possibly extends to 25 meters. Once the fog machine is plugged, the red LED on this receiver of remote controller will light up. When fog machine reached operating temperature, and has ready for emission by pressing the button of transmitter. The fog machine is off emission for about 4 minutes during warm-up and re-heating cycles (about 40 seconds), and turns on when the temperature

reached again.

Connector: JY cable Function:
Wireless ON/OFF

- A- JY cable
- B- Button
- C- Green LED (fog)
- D- Red LED (power)



Model	LC-2N	RC-2N
Cable Length	8m	Wireless
Effective Distance	N/A	Up to 25 m
Connector	JY cable	JY cable
Function	ON/OFF	ON/OFF
Dimension (LxWxH)	90 x 50 x 24 mm	90 x 50 x 24 mm
Weight	0.28 kg	0.1 kg

Page 7